

**MORGAN
★OLSON**

**WORK
TRUCK**

DRY FREIGHT SOLUTIONS

SPRINTER



Standard Features

- FRP Front Wall
- Galvanized Z-wall posts on 16" center
- Anti-sag roof bows on 24" centers
- Premium roll-up rear door
- Complete body undercoating
- 10" Rear Step Bumper with pooched surface
- 2 grab handles at rear for assistance
- Galvannealed Steel rear frame
- .030" Aluminum one-piece roof
- 3" I-beam crossmembers on 16" centers
- 2"x6" dense pine floor
- 3/8" plywood lining, full height on sidewalls
- .040" pre-painted WHITE aluminum sidewall construction
- Cargo dome light with rear switch FMVSS 108 approved lighting
- Mudflaps



**MORGAN
★OLSON**

Available Features

- Aerodynamic Fiberglass Fairing with tall "Cab to Cargo" access door
- Translucent Roof
- Hydraulic Liftgates
- E-track
- D-ring tie downs
- 1 1/8" Hardwood Flooring
- 36" Curbside slider door with two-step aluminum stepwell
- Aluminum Underbody Slider Ramp 12'L x 24"W

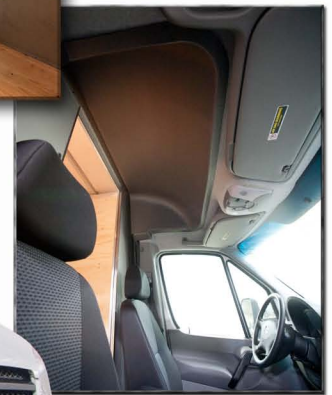
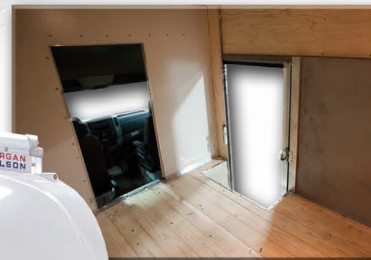


YOU'RE BUYING A BETTER BUILT BODY

THE UDV

Another
**MORGAN
 ★OLSON®**
 Advantage

THE
 ULTIMATE
 DELIVERY
 VEHICLE



DIMENSIONS

Wheelbase	144"	170"	170"
Body Length	12'	14'	15'6"
Load Length	142"	166"	184"
Load Height	85"	85"	85"
Load Width	92"	92"	92"
Overall Width	96"	96"	96"
Overall Height	129"	129"	129"
Floor Height	42"	42"	42"
Rear Step Height	22"	22"	22"
Approx. Payload	4,000#	4,000#	4,000#



SPRINTER

SPRINTER@MORGANOLSON.COM

**MORGAN
 ★OLSON®**

1801 South Nottawa Street
 Sturgis, MI 49091
 800.624.9005

WWW.MORGANOLSON.COM